

Diesel Engine Auxiliary Lift Pump

The diesel fuel lift pump transfers fuel from the fuel tank to the main engine-driven high pressure fuel pump and provides additional boost pressure to prevent loss of engine performance due to pump cavitation. The pump delivers ample fuel flow to engines rated up to 600 bhp.



Pump Description:

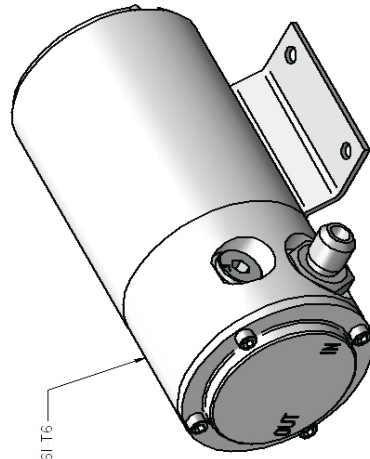
A positive displacement gerotor type pump assembly with integral 12 VDC electric drive motor. The pump housings are constructed from grade 6061 aluminum alloy bar stock that is then finished with a Teflon impregnated hard anodized finish for superior wear and corrosion resistance. An integral valve regulates the output flow to maintain system pressures over the full throttle range from min to max engine horsepower.



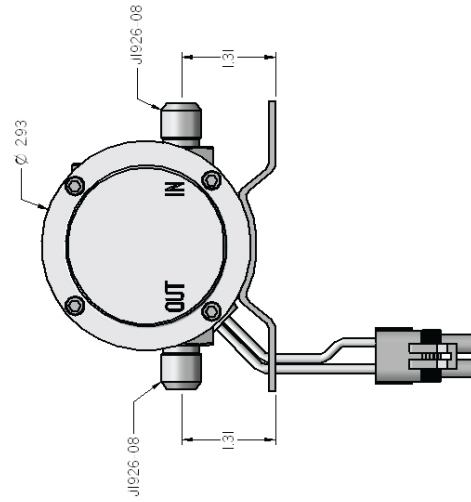
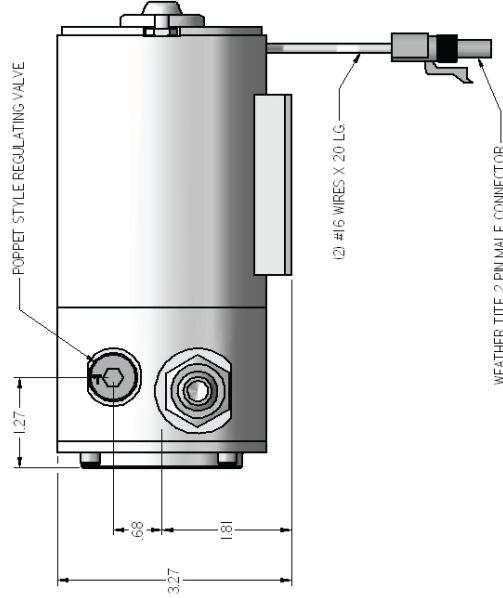
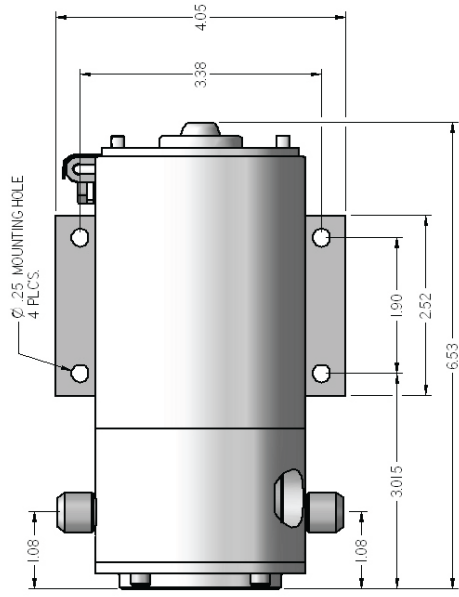
Selected Performance Data:

Fluid	Diesel Fuel
Flow Rate	150 GPH
Rated Pressure	25 psig max.
Temperature Range	-30 °F to +150 °F
Voltage	12-15 VDC, 14 nom
Motor Type	12 VDC TE Brushed
Regulating Valve	Integral, guided poppet
Corrosion Protection	Hard Anodize per AMS 2469
Fluid Ports	Radial, SAE J1926
Mounting	Foot mount
Duty Cycle	Intermittent





PUMP HOUSINGS: HARD ANODIZED 6061 T6



CASE STUDY CS-179 FUEL FORWARDING PUMP