

## Water Cooled Chiller

This series of HFC-134a centrifugal water-cooled chillers is rated to 2,500 tons capacity. They are widely used for both commercial air conditioning and industrial process cooling applications requiring highly accurate temperature control.



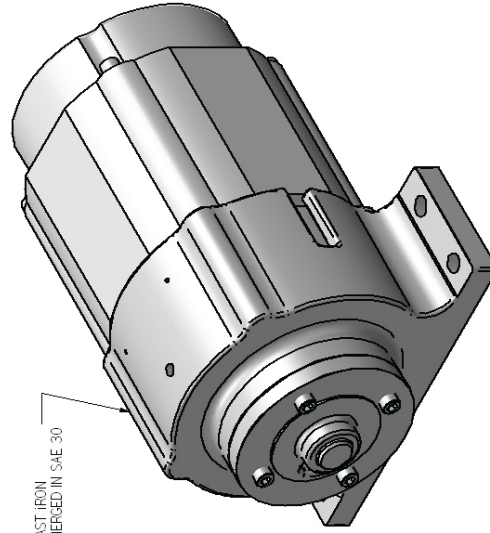
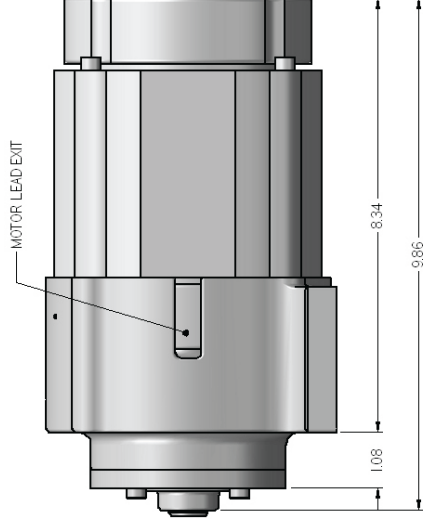
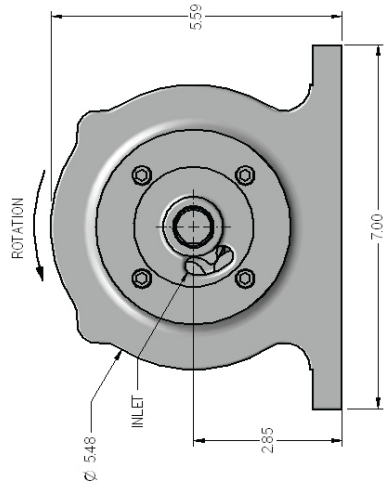
### Pump Description:

The centrifugal compressor lube pump assembly consists of a positive displacement gerotor pump close-coupled to a single phase AC induction drive motor. The pump bolts to a manifold block, which is located inside an oil reservoir that is maintained at a working pressure of 40 psig. All components are submerged in the working fluid. The drive motor is a 2 HP, 115V single-phase rotor and stator set that was selected for compatibility with the saturated mixture of synthetic oil and refrigerant. The design utilizes a hydrodynamic journal bearing system to carry the pump element, shaft, and drive rotor assembly. All pump housings are machined from grade 30 cast iron.

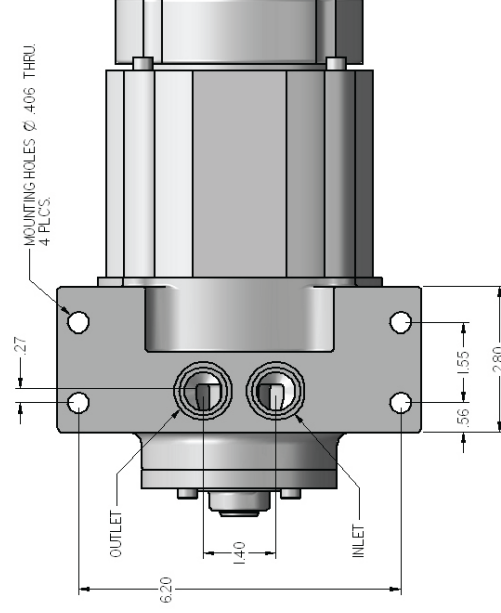
### Selected Performance Data:

Fluid	ISO 46 Synthetic Oil and R-134a
Flow Rate	11 GPM
Operating Pressure	100 psig
Operating Temperature	180°F
Drive Motor	2 HP, 115 VAC, Single Phase, 50/60 HZ
Weight	53 lbs
Design Life	20,000 hours
Duty Cycle	Continuous





HOUSINGS: G-35 CAST IRON  
FINISH NONE, SUBMERGED IN SAE 30



CASE STUDY CS-092 LUBE PUMP