

Skidder Recovery Winch Hydraulic Pump

The twenty ton, heavy duty recovery winch is a single drum unit that mounts on the rear of a crawler tractor, and is driven by engine power through the tractor power take-off. Standard features include single lever control, drag adjustable freespool, and a hydraulically actuated clutch powered by a custom designed gerotor pump developed by Cascon.



Pump Description:

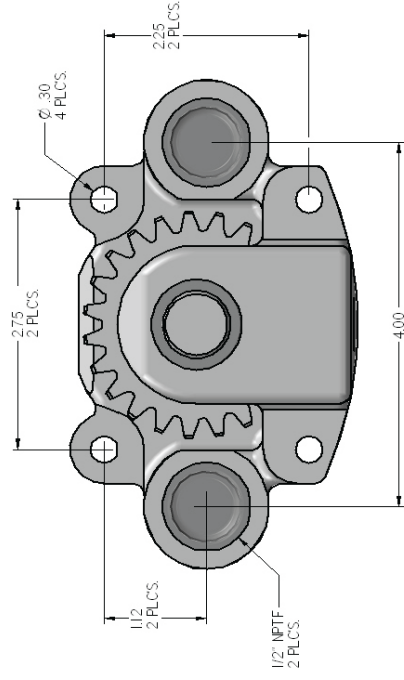
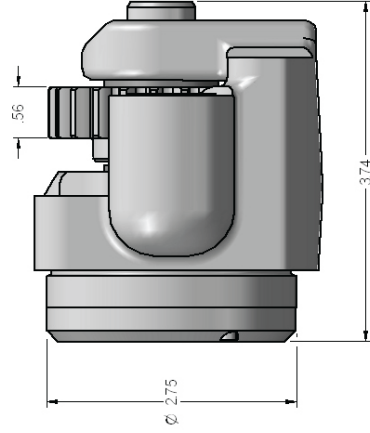
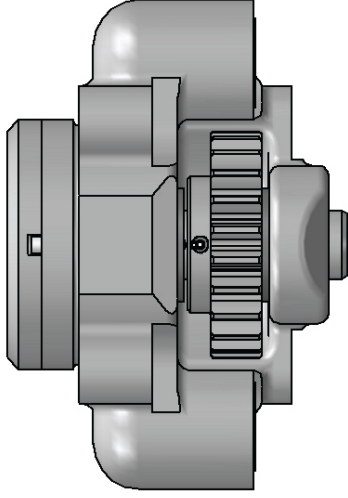
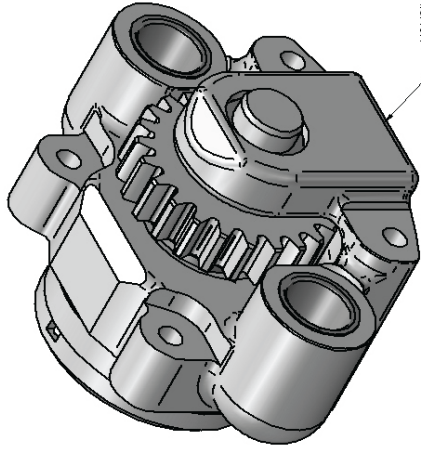
A custom designed gerotor style pump for delivering hydraulic fluid to the clutch of a heavy duty recovery winch. Construction materials consist of a cast iron housing, PM gerotor element, steel drive gear, and hardened steel shaft carried on needle bearings. The unit installs inside the winch enclosure and is mechanically driven through the integral spur gear.



Selected Performance Data:

Fluid	SAE-10
Flow Rate	1.75 GPM
Temperature Range	-40 degF to +150 degF
Operating Pressure	40 psid
Operating Speed	1100 rpm (nom)
MTBF	15 years
Duty Cycle	Continuous





CASE STUDY CS-065 HYDRAULIC PUMP