

Class 8 Truck Tandem Axle

The 40,000 lb Class 8 truck axle is designed to meet the demands for improved axle performance in conjunction with more powerful engines rated to 600 hp and 1850 lb-ft of torque, and higher linehaul payloads up to 80,000 lbs. The axle features many patented technologies for better performance and longer life, including high capacity bearings, a new seal and slinger system, and a unique auto-reversing gerotor style lubrication pump developed by Cascon.



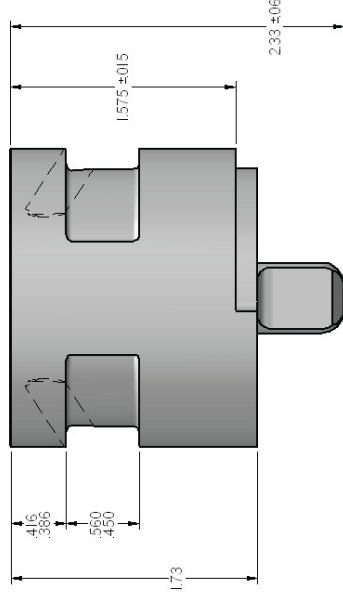
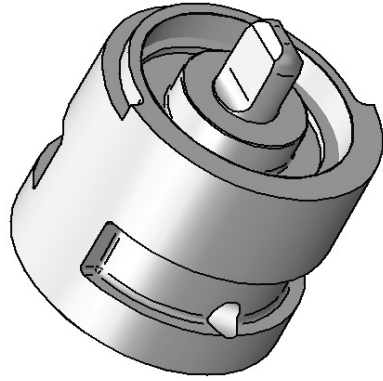
Pump Description:

A custom designed gerotor style pump that lubricates the input shaft and differential gear journal bearing area of a heavy duty tandem drive axle. The design has a patented feature that enables operation only when lubrication is required during axle "spin out" conditions; when one of the two axles in the tandem set is spinning faster than the other. The pump is installed in the differential gear between the input shaft and output shafts and is driven by the input shaft. Critical requirements of the design included maximizing output flow within the compact physical envelope, ability to prime quickly, an auto-reversing feature, and inclusion of an integral relief valve.

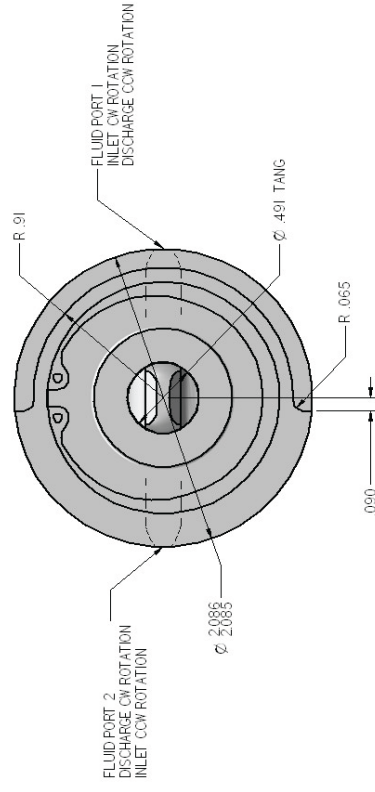
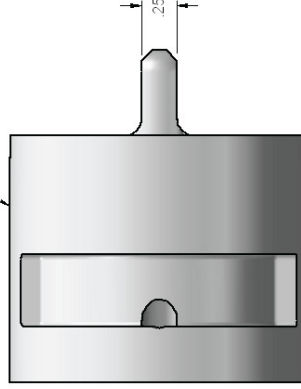
Selected Performance Data:

Fluid	SAE-90
Flow Rate	0.20 to 1.50 GPM
Temperature Range	-30 degF to +140 degF
Operating Pressure	40 psid
Operating Speed	200 - 2000 rpm
Regulating Valve	Integral - 65 psi crack
MTBF	5 years or 750,000 miles
Duty Cycle	Continuous





HOUSING IS MACHINED FROM G-30 OR G-40 CAST IRON



CASE STUDY CS-053 INTERSHAFT LUBE PUMP